

# Colorado

## Water Supply Outlook Report

### April 1, 2018



Bill Ketterhagen, of the Gunnison Conservation District, collects snowpack data along the Crested Butte snow course under sunny skies in late March. Bill measured a course average of 6.2 inches of snow water equivalent, which is only 46 percent of normal for April 1<sup>st</sup> and the fourth lowest snowpack observed since the course was established in 1936. As a whole, snowpack in the Gunnison River basin was at 58 percent of normal on April 1<sup>st</sup>.

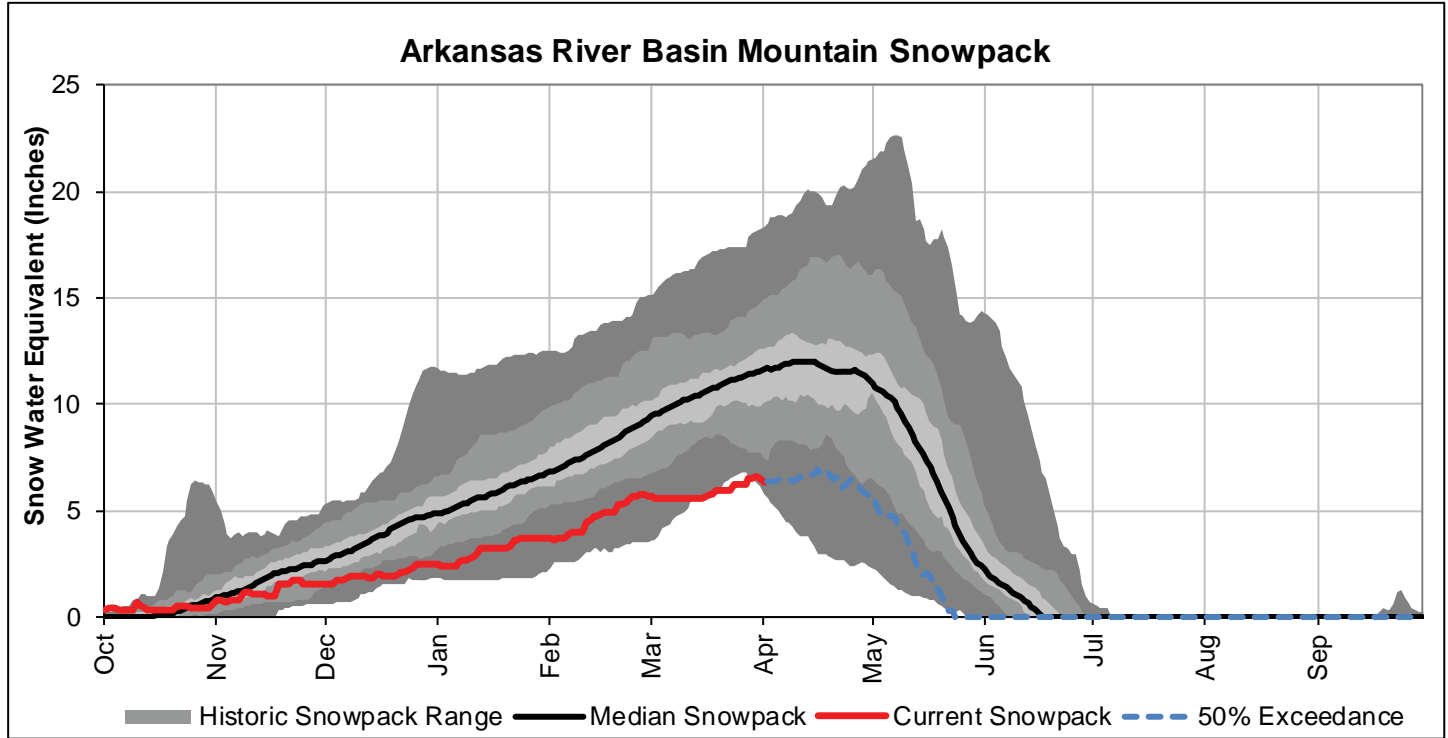
Photo By: Andrew Breibart      Date: March 30, 2018

**REMINDER:** We are soliciting field work photos from the field again this year. Each month we will pick one to grace the cover of this report! Please include information on where, when and of who/what the photo was taken.

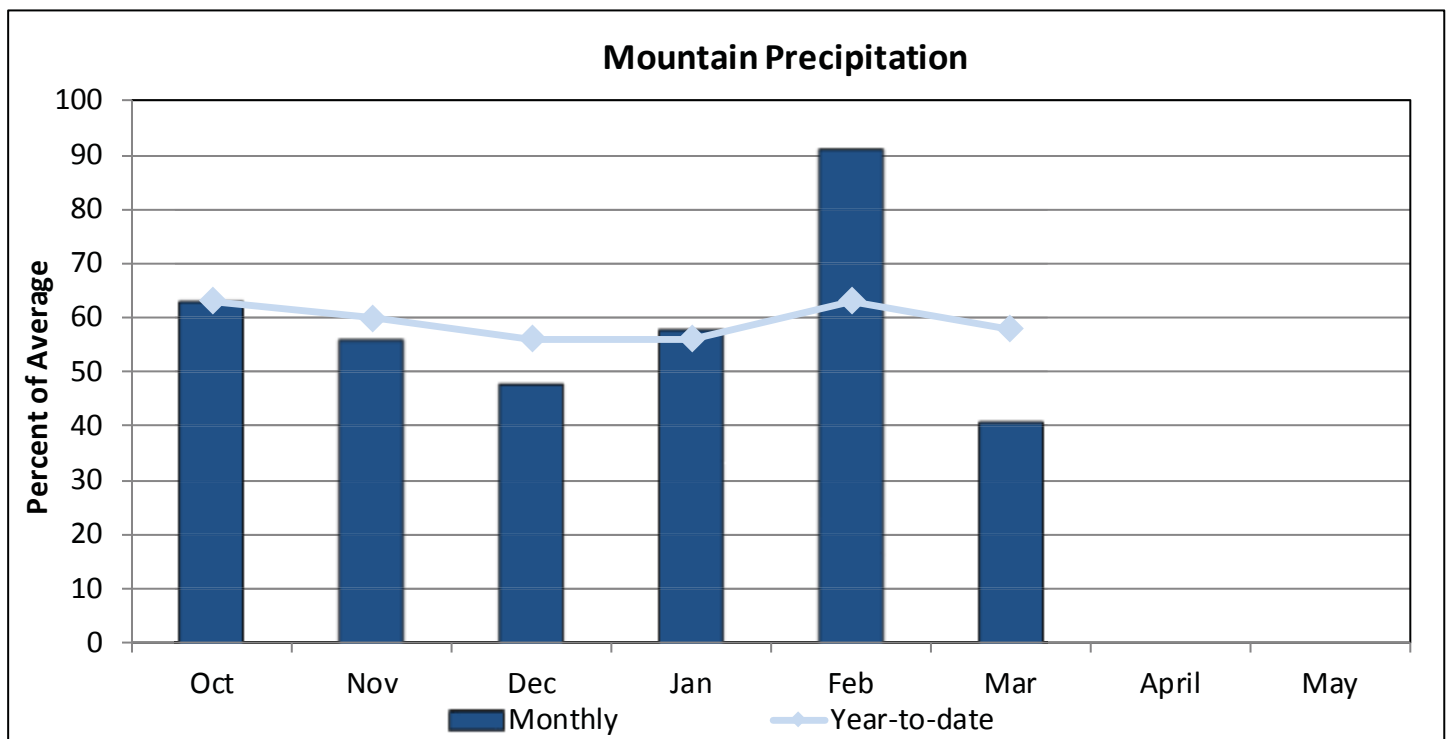
# ARKANSAS RIVER BASIN

April 1, 2018

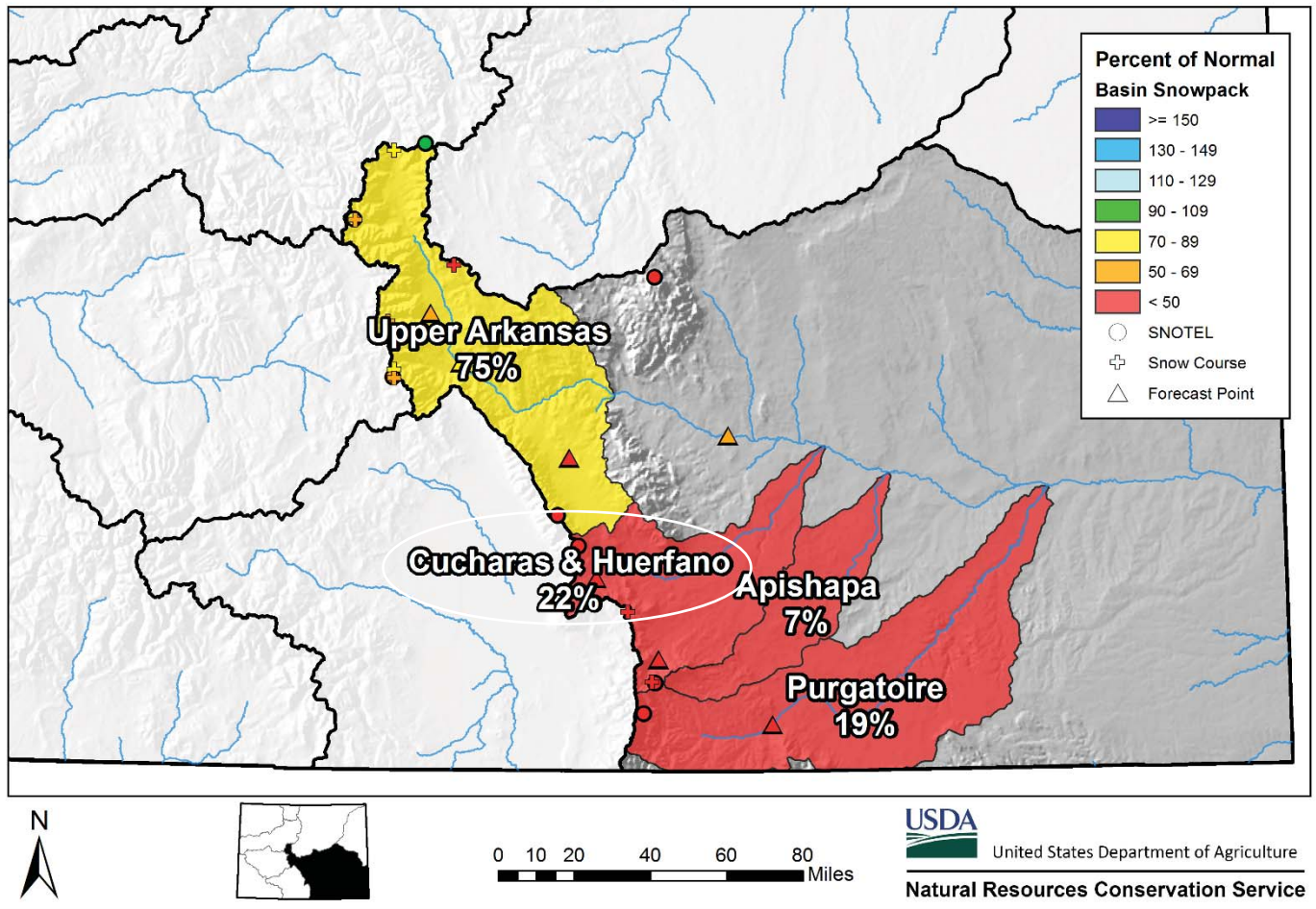
Snowpack in the Arkansas River basin is below normal at 55% of the median. Precipitation for March was 41% of average which brings water year-to-date precipitation to 58% of average. Reservoir storage at the end of March was 131% of average compared to 101% last year. Current streamflow forecasts range from 69% of average for the Arkansas River at Salida to 20% of average for Purgatoire River at Trinidad.



\*SWE values calculated using daily SNOTEL data only



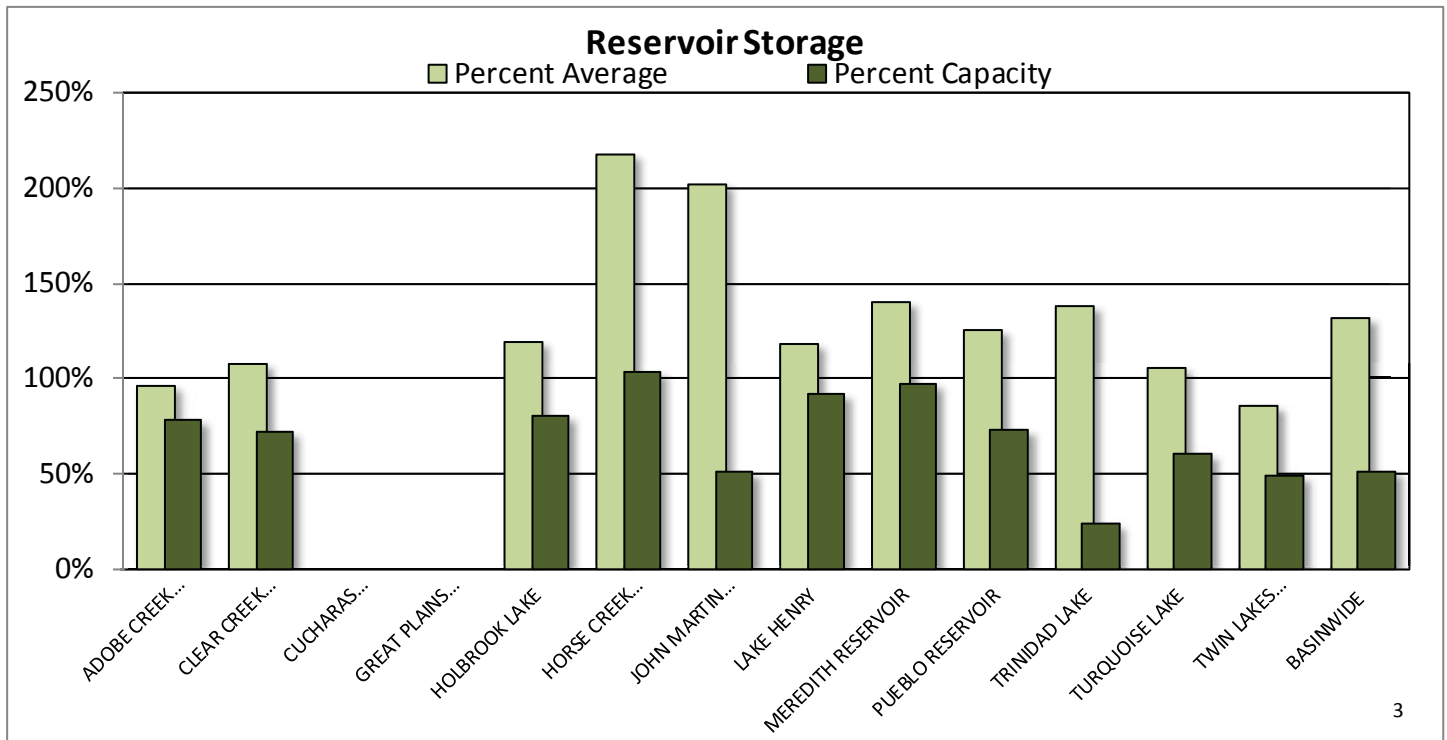
## Arkansas River Basin Snowpack and Streamflow Forecasts April 1, 2018



### Watershed Snowpack Analysis April 1st, 2018

Sub-Basin	# of Sites	% Median	Last Year % Median
Upper Arkansas	9	75	132
<b>Cucharas &amp; Huerfano</b>	<b>5</b>	<b>22</b>	<b>95</b>
Purgatoire	2	19	113
<b>Basin-Wide Total</b>	<b>16</b>	<b>55</b>	<b>118</b>

\*SWE values calculated using first of month SNOTEL data and snow course measurements



### Reservoir Storage End of March 2018

Reservoir	Current (KAF)	Last Year (KAF)	Average (KAF)	Capacity (KAF)
ADOBE CREEK RESERVOIR	48.3	52.4	50.4	62.0
CLEAR CREEK RESERVOIR	8.2	8.1	7.6	11.4
CUCHARAS RESERVOIR				40.0
GREAT PLAINS RESERVOIR				150.0
HOLBROOK LAKE	5.6	5.8	4.7	7.0
HORSE CREEK RESERVOIR	27.9	24.7	12.8	27.0
JOHN MARTIN RESERVOIR	312.1	131.5	155.0	616.0
LAKE HENRY	8.6	8.0	7.3	9.4
MEREDITH RESERVOIR	40.9	37.1	29.2	42.0
PUEBLO RESERVOIR	257.4	253.0	205.8	354.0
TRINIDAD LAKE	39.2	27.0	28.5	167.0
TURQUOISE LAKE	77.3	41.5	73.5	127.0
TWIN LAKES RESERVOIR	42.3	41.2	49.6	86.0
<b>BASINWIDE</b>	<b>867.8</b>	<b>630.3</b>	<b>624.4</b>	<b>1698.8</b>
Number of Reservoirs	11	11	11	13

# ARKANSAS RIVER BASIN

## Water Supply Forecasts

April 1, 2018

Forecast Exceedance Probabilities and Volumes

<----- Drier ----- Future Conditions ----- Wetter ----->

Box labels on chart are volumes of water in thousand acre-feet.

