

# Colorado

## Water Supply Outlook Report

June 1, 2018

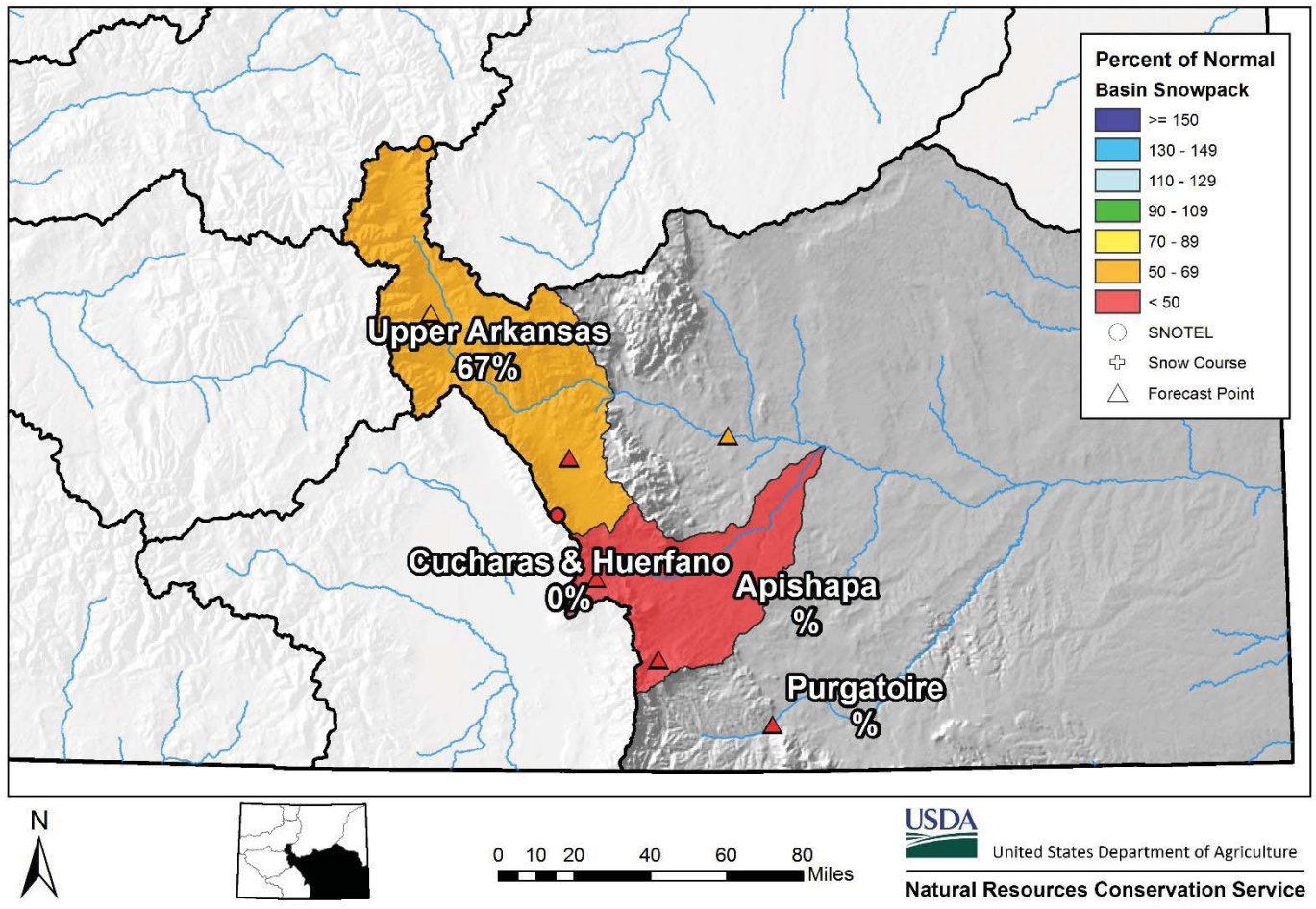


The fourteen thousand foot peaks of the southern Sangre de Cristo Mountains in Colorado were almost entirely snow-free by mid-May this year. The Rio Grande and Arkansas River basins, fed in part from these mountains, are extremely dry as of June 1<sup>st</sup>. Since the beginning of the water year on October 1<sup>st</sup>, both basins have received precipitation that is far below average and have been subject to above average temperatures. These conditions have resulted in snowpack peaks near half of normal and the disappearance of the seasonal snowpack as much as a month early in some locations. Streamflows reflect these conditions and are very low across these basins and the rest of southern Colorado.

Photo By: Lexi Landers Date: May 15, 2018

**REMINDER:** We are soliciting field work photos from the field again this year. Each month we will pick one to grace the cover of this report! Please include information on where, when and of who/what the photo was taken.

## Arkansas River Basin Snowpack and Streamflow Forecasts June 1, 2018



### Watershed Snowpack Analysis June 1st, 2018

Sub-Basin	# of Sites	% Median	Last Year % Median
Upper Arkansas	3	67	143
Cucharas & Huerfano	3	0	100
Purgatoire	2	Median is 0	
<b>Basin-Wide Total</b>	<b>8</b>	<b>60</b>	<b>139</b>

\*SWE values calculated using first of month SNOTEL data and snow course measurements

# ARKANSAS RIVER BASIN

## Water Supply Forecasts

### June 1, 2018

Forecast Exceedance Probabilities and Volumes

<----- Drier ----- Future Conditions ----- Wetter ----->

Box labels on chart are volumes of water in thousand acre-feet.

